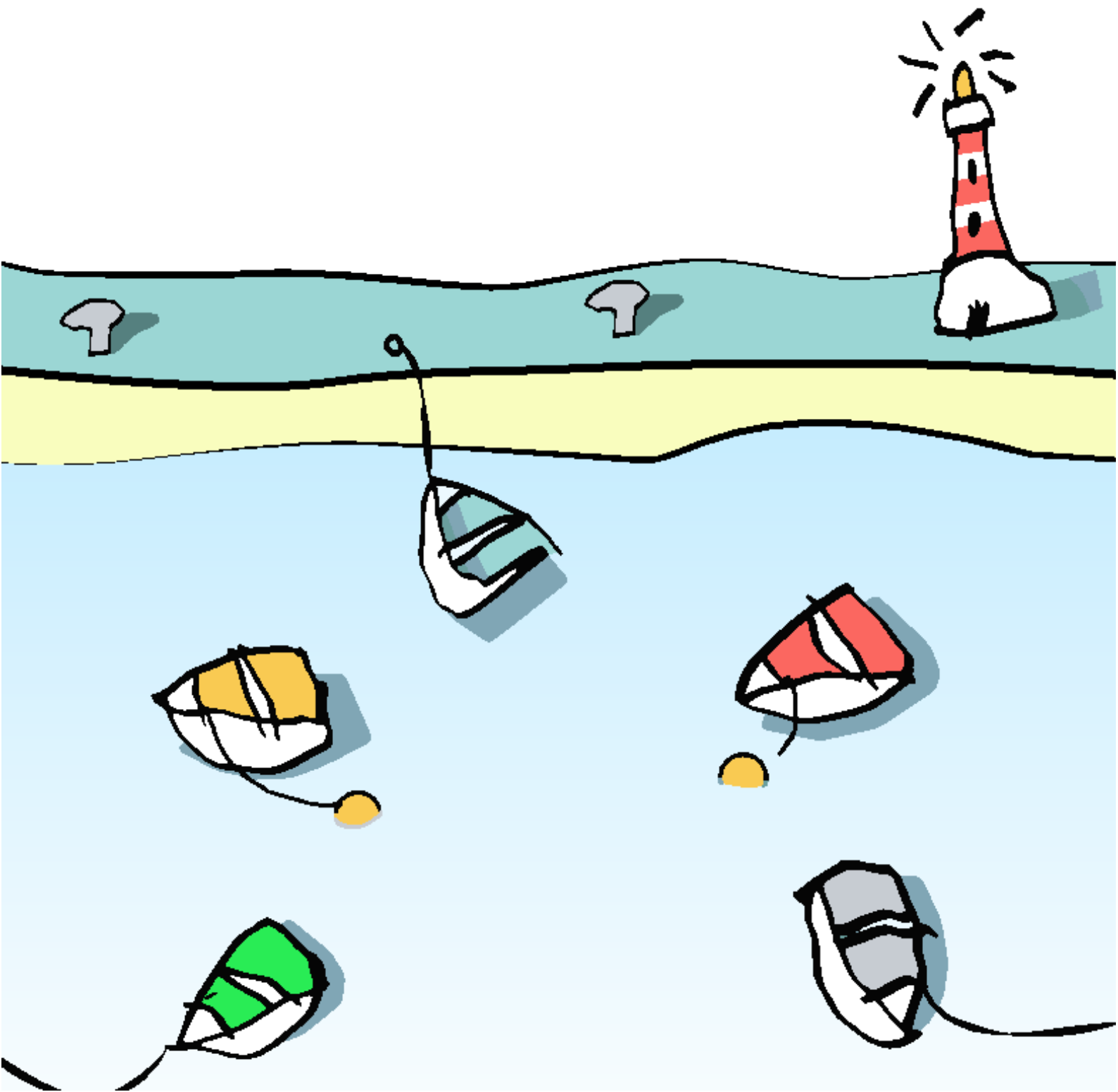


Cove Bay kindergarten



Our Nursery



Located in the heart of Cove Bay, Aberdeen, our nursery is housed in a former residential property, with an extension to the rear of the building creating a substantial yet homely nursery setting. We are centrally located providing easy access to main routes and convenient links to public transport services. There is also ample on-street parking outside our nursery allowing for safe and easy drop offs and collection.

Our kindergarten has spacious, bright areas dedicated to each stage of development from birth to 5 years of age. We provide childcare from 7.30am - 6pm, and are open all year round except for Christmas and New Year.

Our Childcare Approach

Cove Bay Kindergarten provides stimulating and inspiring childcare aiming to encourage the development of children through play, interaction, creativity, physical activity and through a warm and nurturing environment.

We are passionate about quality Early Years Care and Education and recognise the importance of each child's self-development. We believe that children learn through play, example, interaction and teaching. These four concepts form the core of our ethos and we strive to expand your child's development through these methods.



We aim to help every child in every aspect of their growth and achieve this through praise, guidance and encouragement. Children will be encouraged to develop manners, learn to be kind, share, and respect others, as well as being stimulated creatively and mentally through our child led activities. Our child led activities allow our children to flourish into independent and confident individuals. Above all, we strive to provide a secure and friendly environment which will make you completely relaxed and at ease when leaving your child.



Our Aims and Objectives



To provide a safe and stimulating atmosphere to encourage each child's development.



To develop every child's healthy self-image through play, guidance, support and encouragement.



To encourage children to develop respect, learn to share, learn to be kind to others and develop good manners.



To encourage children's interest in learning through promoting their desire to learn and experiment in an active learning environment.



To work in partnership with parents. To update parents regularly with information about their child's development and the nursery, through newsletters, parents evenings, focus groups and E-Learning Journals.



To constantly train our staff through our in-house training company, BNG Training, and through local authority courses, aiming to increase and extend the skills and knowledge our staff currently possess.



To continue to liaise with local schools and members of the local community, allowing us to share good practice.



To continue to monitor, self-evaluate and improve our service to ensure our children and parents are getting the highest quality standard of care.



Starting at Nursery

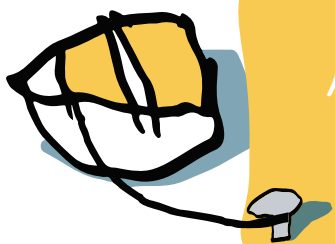
We provide complimentary Settling in Sessions which gives you and your child time to get familiar with our nursery. Once your child starts with us, they will be assigned a designated key worker. Your child's key worker will be responsible for monitoring your child's development and will be your first point of contact at nursery. Your child's key worker will always be available to discuss your child's progress.



Settling in Sessions



Your child will be settled into our nursery gradually. Firstly, spending one hour, building up to a half-day session and then staying for lunch. This phasing in allows your child to become familiar with our nursery surroundings and staff. These settling in sessions usually last a week, but this is dependent on each individual child. We understand that every child's different and our aim is to make these sessions as flexible and comforting as possible to guarantee that both you and your child are well adjusted to our surroundings. Parent visits are encouraged whilst your child is gradually settled into nursery so please feel free to do drop in any time to see how your child is doing, even if they are no longer in their Settling In phase.



"We have nothing but praise to offer for the staff and nursery."

- Cove Bay Kindergarten Parent



Our Rooms

Our playrooms are generously proportioned, carefully planned and extensively resourced to create inspiring learning environments in which children can grow and learn with confidence. Each playroom has access to outdoor play areas, offering the opportunity for regular outdoor learning opportunities across all areas of the curriculum. A set of development records are held for each child in the nursery and on our E-Learning Journals. These are available for viewing at all times and are continuously updated with pictures and observations made on your child's progress. Access to your child's records are available 24 hours a day so you don't miss out on anything and strict confidentiality is maintained at all times.

Sunbeams



Our Sunbeams Room is registered for up to 15 children from birth to 2 years of age. We have highly experienced staff whose priority is to mirror the home routine of each baby as closely as possible. This room is a comforting, spacious area with a quiet and secure sleeping area within the room where babies can go to sleep in our cots or our sleeping mats. We ask parents to supply their own nappies, cream and milk to ensure continuity between home and nursery. Our staff take babies out for walks every day to ensure babies get as much fresh air as possible. We provide a variety of stimulating activities in order to promote your baby's all-round development and have a display wall to see what activities they have been up to that week! We are a breast feeding friendly nursery, with staff trained in breast milk storage and we encourage and welcome you to visit during the day to feed your child whenever necessary.

Once your baby is around 2 years old and have found their feet, we would hope to advance them to our Moonbeams Room. This would only ever take place after a discussion with yourself.



Moonbeams



After our Sunbeams Room we will look to move your child to our Moonbeams Room where we can care for up to 18 children for 2 - 3 years of age. In this room we provide a more structured day with a much greater choice of learning opportunities to provide a smooth transition into the toddler stage. Activities in this room includes construction activities, table top games, stories, role play and much more. We find these activities allow children to express their creativity, encourages children to explore and develop their senses, and can even help develop language skills. After a discussion with yourself, we aim for your child to progress into our Shining Stars Room when they turn 3 years old.

Shining Stars

Cove Bay Kindergarten is recognised as an early learning and childcare centre by the Education Department. We believe your child's development between the ages of 3 to 5 years is crucial in forming your child's core development. Your child will progress to the Shining Stars Room when they are ready. We pride ourselves on ensuring that when children leave our nursery to move on to school they do so confidently and independently, whilst taking with them the enjoyment of learning and a pride in their achievements. We would strive for your child to be able to have the following skills when leaving the nursery: recognising and writing their own name, demonstrating good observational skills, showing preliminary ready skills, able to confidently control a pencil, showing creative skills and knowledge of numbers. At the end of each year the children in this room take part in a graduation ceremony to mark the end of their time at Cove Bay Kindergarten!

Room Ratios

Age	0-2 years	2-3 years	3-5 years
Staff Ratio	1:3	1:5	1:8

*Minimum number of staff to children – in accordance with current Care Inspectorate regulations.



Outdoor Play



We love to get outside here at Cove Bay Kindergarten! We have a large outdoor play area for our 3-5 year olds, a separate garden for our 2-3 year olds and a smaller garden area for our babies. All our outdoor areas provides children with opportunities to get fresh air and have fun in a safe and secure environment. The children love playing in our natural garden and helping take care of the environment.

As well as access to our fabulous outdoor play areas, children of all ages enjoy regular walks in the local area. Our youngest children are often seen out in our double buggies enjoying the fresh air, sights and sounds of the local community. We use Walkodile Child Safety Systems and high visibility vests to keep children safe when out on trips away from the nursery. Our surrounding areas include the beach, a park, fields and small woods - all of which our children love to explore!

We believe there is no such thing as bad weather, only inappropriate clothing, and so we ask parents to provide their children with appropriate clothing for all types of weather from wellington-boots to sunglasses.

Our Team

Our nursery staff team comprises of a blend of mature, experienced and professionally qualified nursery practitioners and trainees working towards their qualifications. All staff are skilled in expertly guiding your child through the wonders of learning whilst playing. Our staff are dedicated to treating your child with patience, affection, enthusiasm and understanding. All staff participate in ongoing training to constantly progress their own skills and abilities. Our manager, Shelley Robertson, has a professional qualification in childcare and over 8 years of experience working with children of all ages. She manages her staff team to ensure the nursery provides a secure, family environment where you can feel relaxed and confident in the knowledge that your child is being cared for by a dedicated staff team within a safe and secure environment.



Our Menu



Our nutritionally balanced menus ensure our children are raring to go every day! Children are offered a range of delicious, nutritious meals and snacks. Our wholesome and nourishing menus are expertly designed to give your little one the very best start in life.

The meals we provide are all home-cooked within our nursery by our experienced, on site nursery chef. Our chef has carefully created a 5 week rolling menu, which has been NHS accredited to ensure a healthy well balanced diet for all children. Whenever possible we try to source all our food locally and organically, including seasonal vegetables and fruit. We believe that by providing our children with nutritional food, bursting with fresh fruit and vegetables, is a necessity in each child's physical and mental well-being.

If your child is arriving early for nursery and would like breakfast, we are happy to accommodate this requirement. Similarly, if you would like to bring a packed dinner to the nursery we can ensure your child is fed before home time.

All of our delicious food is included within our fees! We offer breakfast, lunch and an afternoon snack every day!

Dietary Requirements

Our menus change every 5 weeks, in line with the availability of seasonal produce. We have a flexible approach and are happy to cater for a range of special dietary, medical, religious or cultural requirements.

We ask our parents to bring in formula milk for babies, in accordance with current guidelines. These will be made up as required and stored safely in accordance with manufacturer's suggestions. Our staff have all been fully trained in Food Hygiene and are passionate about teaching children the importance of good hygiene too. We promote washing hands before and after meals and snacks and encourage children to help serve their own food and clean their teeth after meals.

Above all, we believe that meal times should be a happy, relaxed time where children learn social skills, manners, good hygiene practise and healthy eating habits to last them a lifetime. To receive a sample of our delicious 5 week rolling menu, please contact us and we will be happy to send you a copy.



Environmental Commitment



We are committed to being an environmentally friendly nursery, making changes wherever we can in order to make the world a cleaner place! We are a registered ECO-Nursery and are committed to teach our children about their environment and the effect we have on it in our day to day lives. Our children are passionate recyclers and love nothing more than an afternoon caring for their garden. We always consider environmental implication when planning activities for our children. We will continue in our green approach to develop strong environmental awareness within our children, helping their little green fingers to care for the world for many years!

Awards & Accolades

Our passionate commitment to being a leading independent provider of Early Years Care and Education, providing quality standards has led us to being the proud recipients of many impressive awards, including:

- NMT Nursery Group Award 2018
- Recognised Investors in People Organisation
- NDNA Member (National Day Nurseries Association)
- NHS Menu Accreditations
- Eco-School Award – Silver
- NHS Childsmile Dental Scheme
- Day Nurseries Recommended Top 20 Nursery Group 2018
- Nursery Chain of the Year 2013 – Nursery World Awards
- Bertram Gala Award 2013 – Employee of the Year
- Aberdeen College Placement Provider



Sessions & Fees

Our nursery is open from 7.30am - 6pm and cares for children from birth to 5 years of age. Full/Part time sessions available and 3-5 year old funding is available. We are open all year round with the exception of Christmas and New Year.

What's Included?

- Quality Early Years Care and Education
- Quality resources and equipment
- Freshly made, healthy meals and snacks
- Celebration of festivals throughout the year
- Regular outings in the local area
- Graduation Ceremony when ready to move on to primary school
- E-Learning Journals & Tablets
- Bi-lingual staff: Polish and Russian

Extras & Discounts

- Sibling discount 5-10%*
- NHS staff discount 5-10%*

**Terms & Conditions apply*




Keeping in touch

In recognition that education begins in the home, we are fully committed to a partnership approach with parents. The needs of each child are discussed in full, prior to admission and on an ongoing basis. We are keen to keep parents as involved as possible during their child's time in nursery. Each day's activities are tracked to ensure that parents are encouraged to discuss their child's day with their key worker and individual records are available at all times for parents to view. We also hold regular Parent Focus Groups and issue a monthly Newsletter to keep our parents in the loop!



Social Media

We use social media to keep our parents up to date with upcoming events and offers available. We also believe it is a great and convenient way for us to receive your feedback and suggestions.

-  @covebay.kindergarten.5
-  @CovebayK
-  @thebertramnurserygroup

The Care Inspectorate

We are regulated by The Care Inspectorate and by Environmental Health Services to help us maintain the highest possible standards within our nursery. Should you wish for any further information please do not hesitate to contact them on 0845 600 9527.



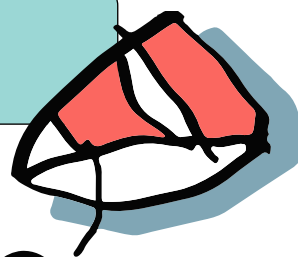
We are proud of our regulatory reports and these are available for you to view within our nursery and on our website.

Visit Us!

If you haven't already done so, we recommend you come for a unique viewing of our nursery to see all of our fantastic facilities for yourself! We can arrange a personal showround during any weekday, and will be as flexible as we can to fit around your family's needs.

If you would like to book your nursery visit or require more information please contact us on 01224 249 234 (select option 1) or email enquiries@bertramuk.com

Thank you!



Cove Bay Kindergarten

Cove Road, Cove Bay, Aberdeen, AB12 3NX

01224 249 234

www.covebay-nursery.co.uk

enquiries@bertramuk.com

www.facebook.com/covebay.kindergarten.5

[Twitter.com/@CovebayK](https://twitter.com/CovebayK)

